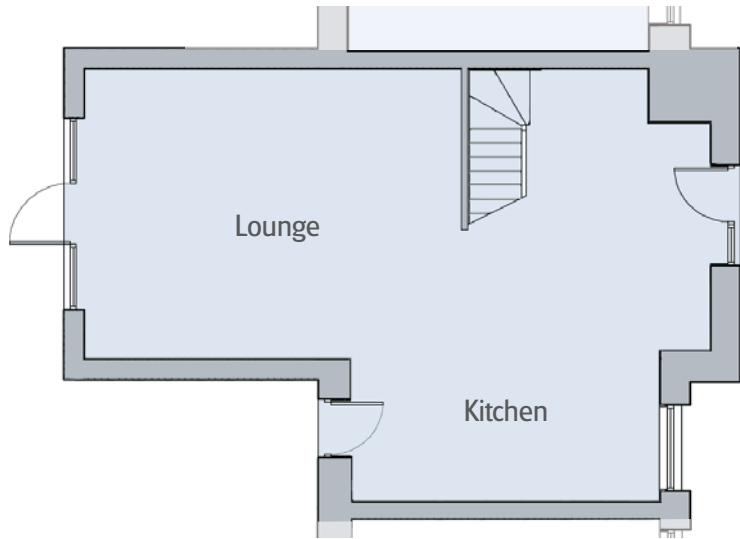
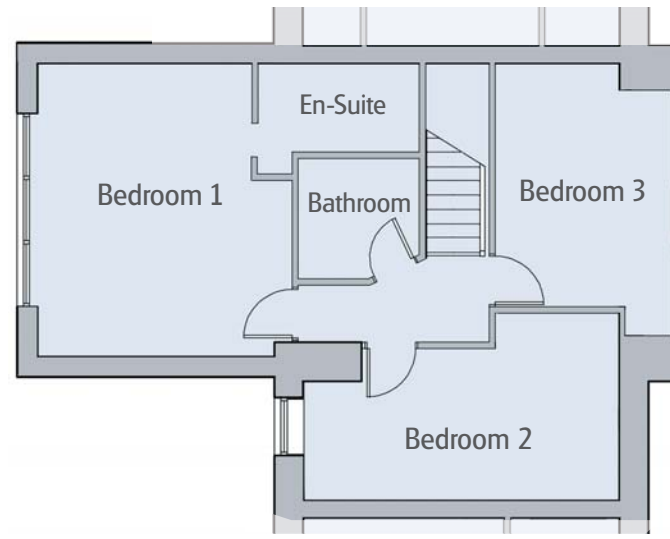


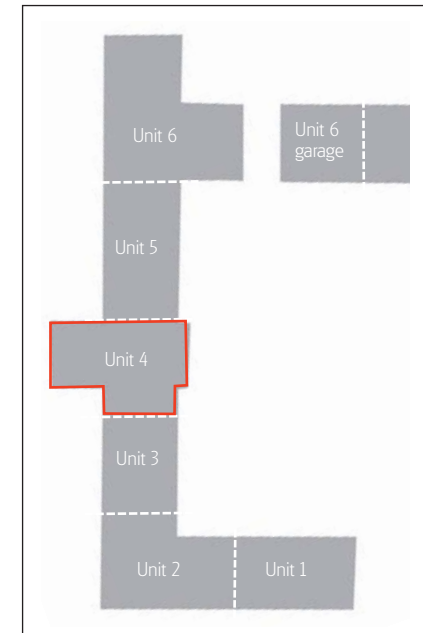
Unit 4, Rode Hall Farm, North Rode, Cheshire



Ground floor



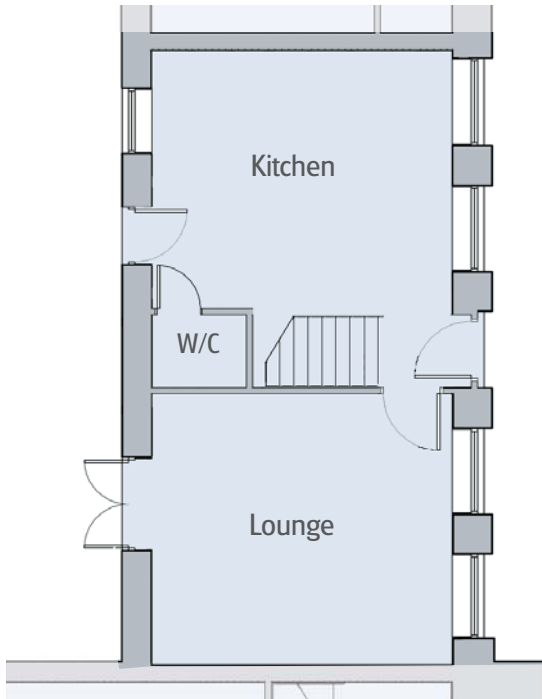
First floor



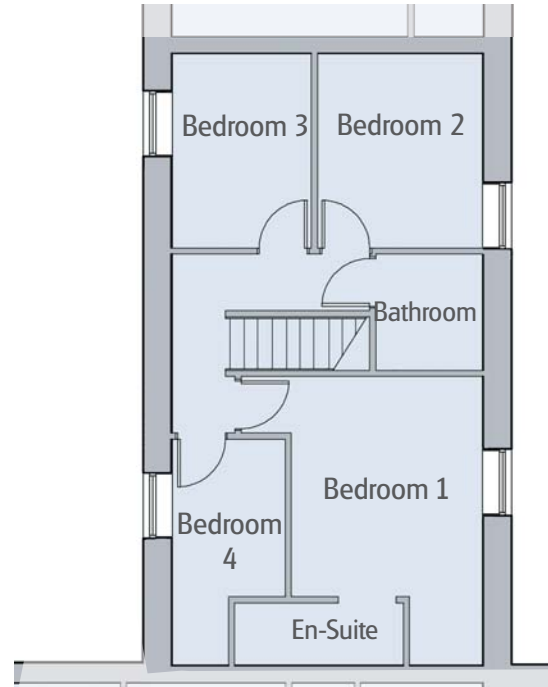
Room sizes

Lounge/kitchen	10.2m max x 6.3m max	(33'9" x 20'8")
Bedroom 1	4.65m x 3.8m max	(15'3" x 12'5")
Bedroom 2	4.9m x 2.0m	(16' x 6'6")
Bedroom 3	3.5m x 2.5m	(12'5" x 8'2")
Bathroom	1.7m x 2.25m	(5'7" x 7'4")

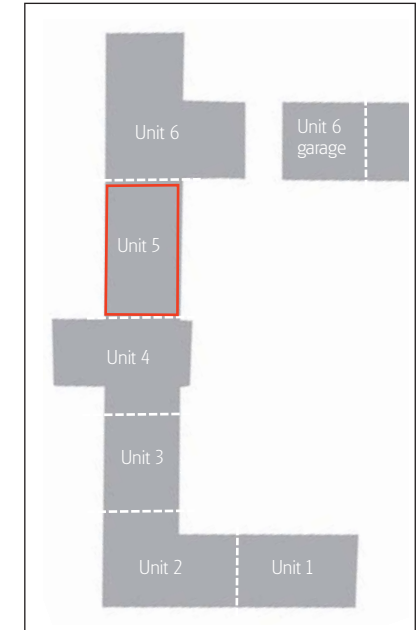
Unit 5, Rode Hall Farm, North Rode, Cheshire



Ground floor



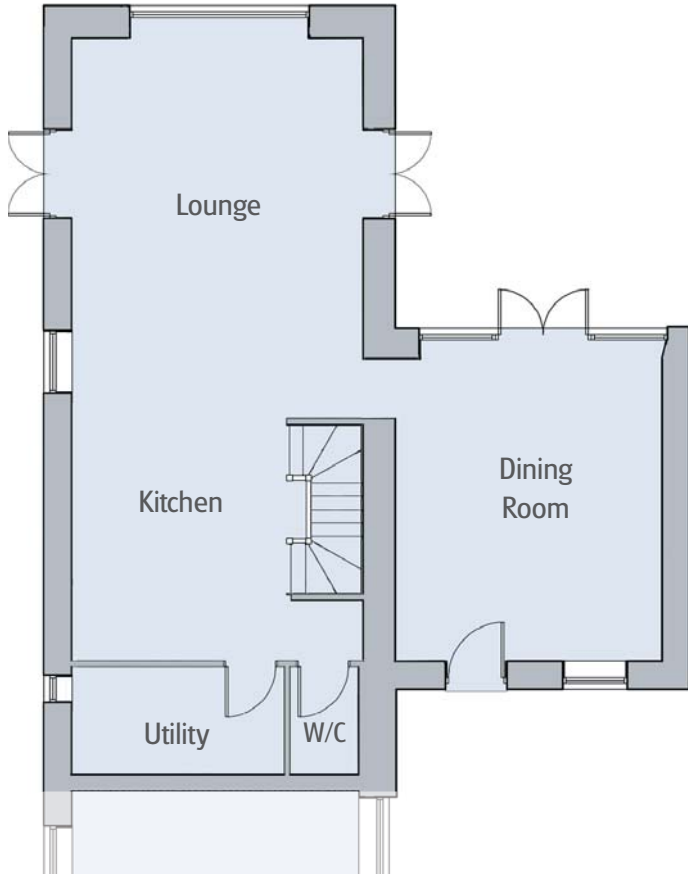
First floor



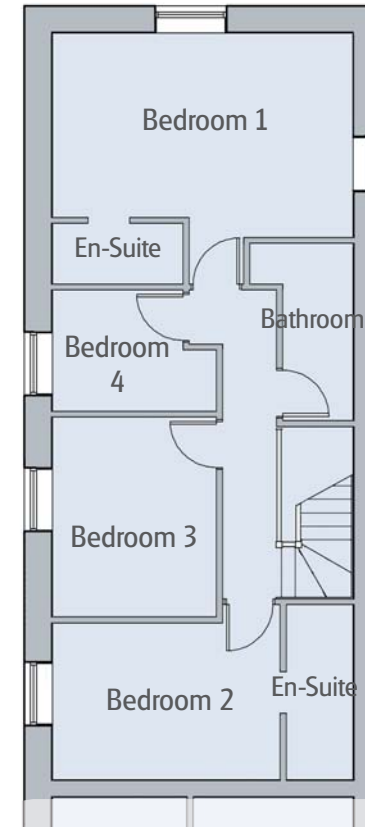
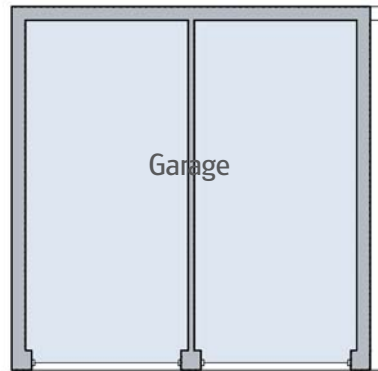
Room sizes

Lounge	4.6m x 4.6m	(15'1" x 15'1")
Kitchen	5.3m x 4.65m	(17'4" x 15'3")
Bedroom 1	3.4m x 3.2m	(11'2" x 10'6")
Bedroom 2	3.33m x 2.55m	(10'11" x 8'4")
Bedroom 3	3.33m x 2.3m	(10' x 8'6")
Bedroom 4	2.65m x 1.7m	(8'8" x 5'7")
Bathroom	1.7m x 1.76m	(5'7" x 5'9")

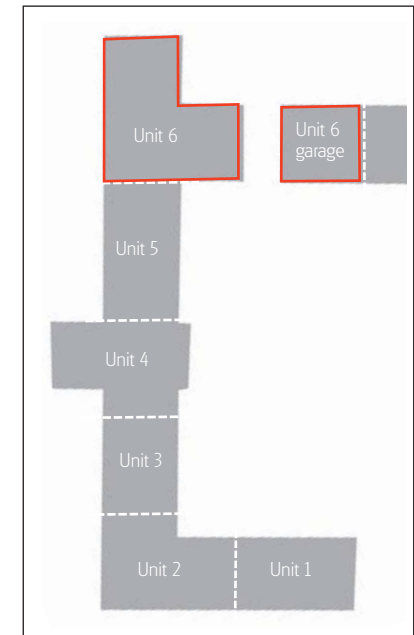
Unit 6, Rode Hall Farm, North Rode, Cheshire



Ground floor



First floor



Room sizes

Lounge/Kitchen	10.4m x 4.8m	(34'3" x 15'9")	Bedroom 1	5.16m x 3.1m	(16'11" x 10'2")
Dining Room	5.3m x 4.25m	(17'4" x 13'9")	Bedroom 2	3.7m x 3.22m	(12'2" x 10'7")
Utility	3.63m x 1.58m	(11'11" x 5'2")	Bedroom 3	2.81m x 2.57m	(9'2" x 10'7")
			Bedroom 4	2.6m x 1.84m	(8'6" x 6')
			Bathroom	2.52m x 1.7m	(8'4" x 5'7")