

Burbage Heights, Buxton, Derbyshire

Plots 2, 3 & 4

Ground floor

Kitchen: 5.8m x 3.1m (19' x 10'2")

Lounge: 4.8m x 3.6m (15'9" x 11'10")

Dining Room: 3.6m x 2.9m (11'10" x 9'6")

Utility: 2.5m x 1.6m (8'2" x 5'3")

First floor

Bedroom 1: 4.4m x 2.8m (14'5" x 9'2")

Bedroom 2: 3.4m x 2.8m (11'2" x 9'2")

Bedroom 3: 3.6m x 2.9m (11'10" x 9'6")

Bedroom 4: 4.9m x 3.6m (16'1" x 11'10")

Second floor

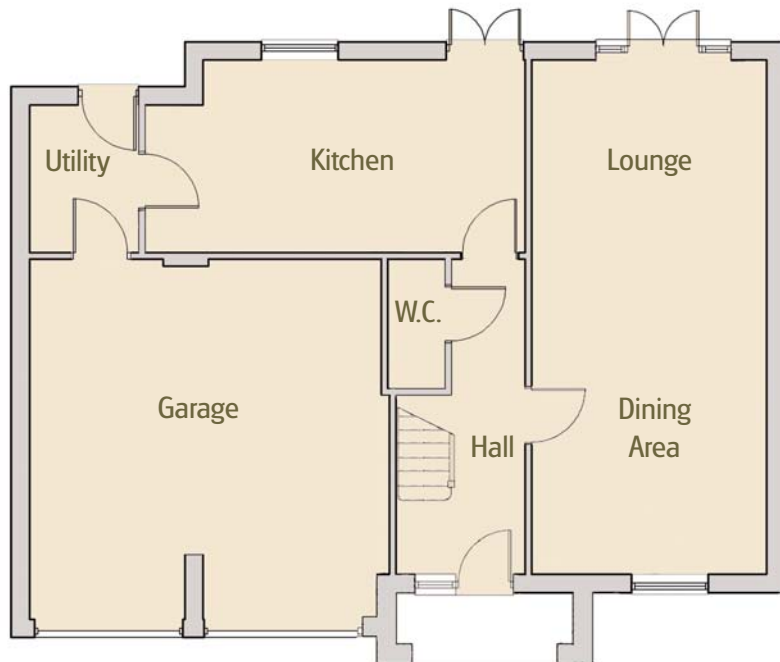
Bedroom 5: 5.0m x 3.7m (16'5" x 12'2")

Bedroom 6: 5.0m x 2.9m (16'5" x 9'6")

Note: All measurements are approximate, final sizes may be subject to alteration.



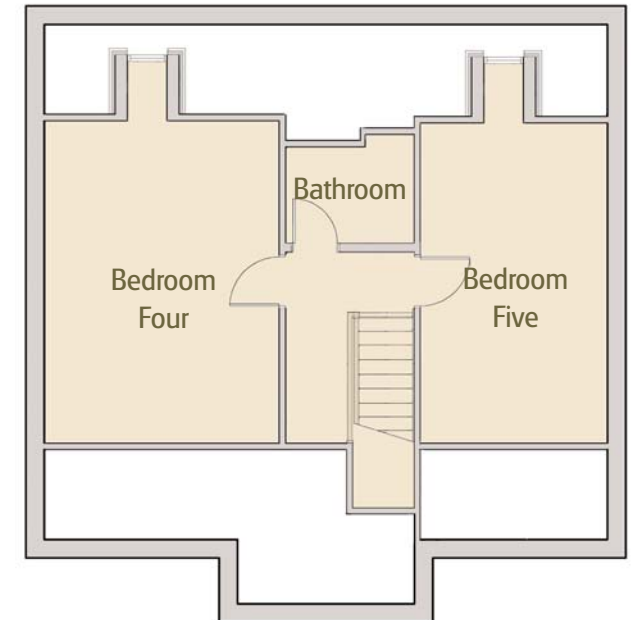
Ground floor



First floor



Second floor



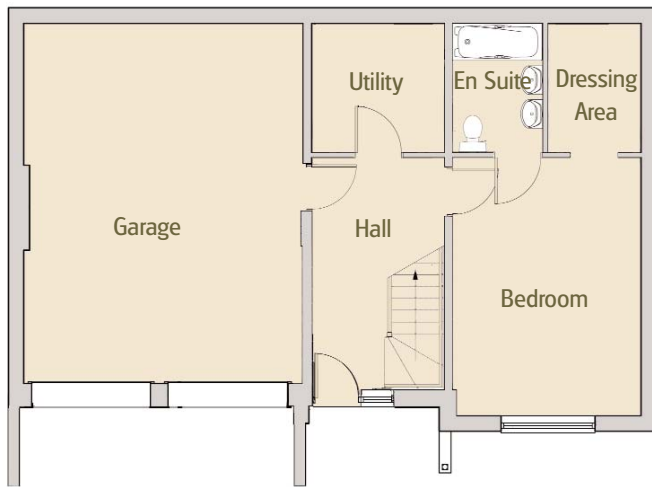
Note: All measurements are approximate, final sizes may be subject to alteration.

Burbage Heights, Buxton, Derbyshire

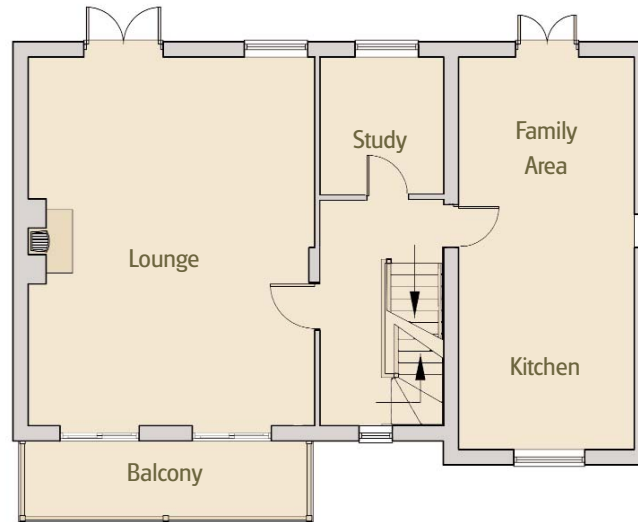
Plot 6



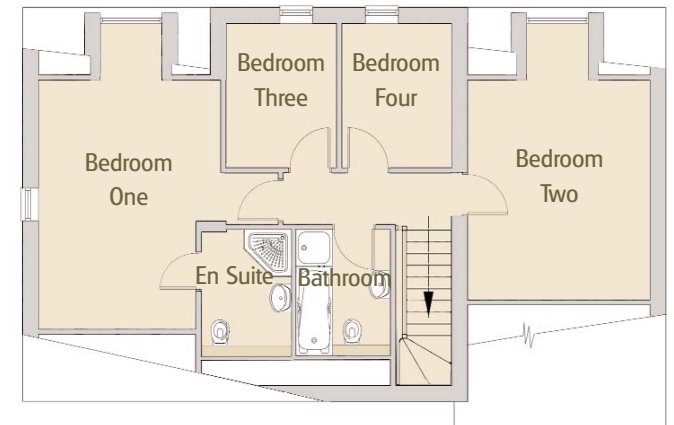
Lower ground floor



Upper ground floor



First floor



Burbage Heights, Buxton, Derbyshire

Plots 7 & 8

Lower ground floor

Master bedroom: 4.6m x 3.53m (15'1" x 11'7")

Dressing area: 2.62m x 1.6m (8'7" x 5'3")

Utility: 2.54m x 2.39m (8'4" x 7'10")

Upper ground floor

Dining kitchen: 6.2m x 3.56m (20'4" x 11'8")

Lounge: 6.86m x 5.18m (22'6" x 17'0")

Study: 2.46m x 2.41m (8'1" x 7'11")

Second floor

Bedroom 1: 6.2m x 3.2m (20'4" x 10'6")

Bedroom 2: 5m x 3.51m (16'5" x 11'6")

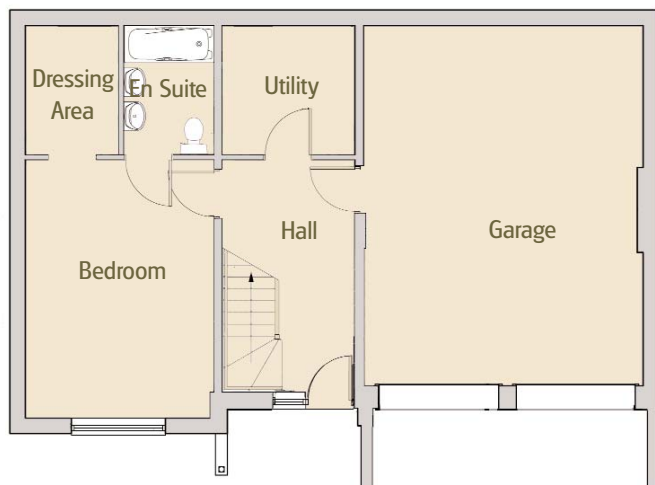
Bedroom 3: 2.62m x 2.01m (8'7" X 6'7")

Bedroom 4: 2.62m x 2.01m (8'7" X 6'7")

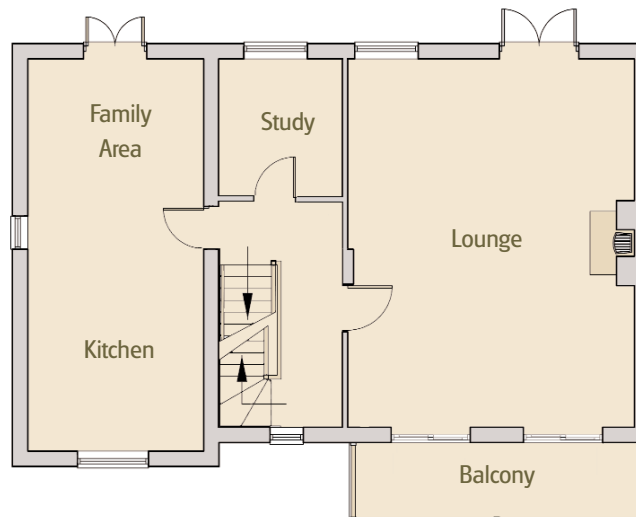
Note: All measurements are approximate, final sizes may be subject to alteration.



Lower ground floor



Upper ground floor



First floor

