

Farleigh Mill, Bradbourne Mill, Derbyshire



First floor

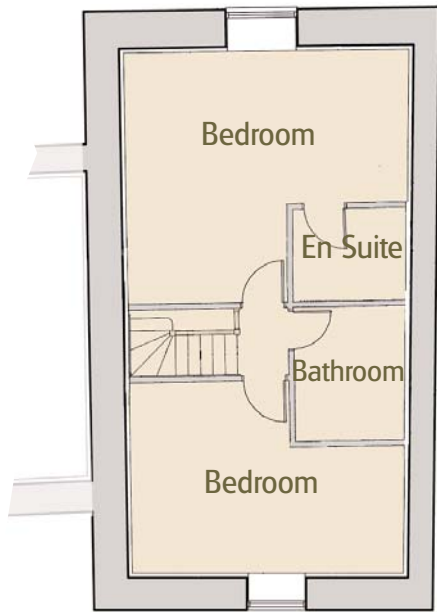


Upper ground floor

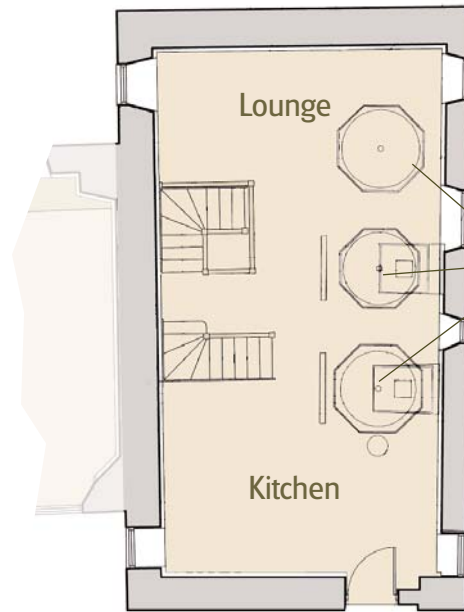


Lower ground floor

Norbury Mill, Bradbourne Mill, Derbyshire

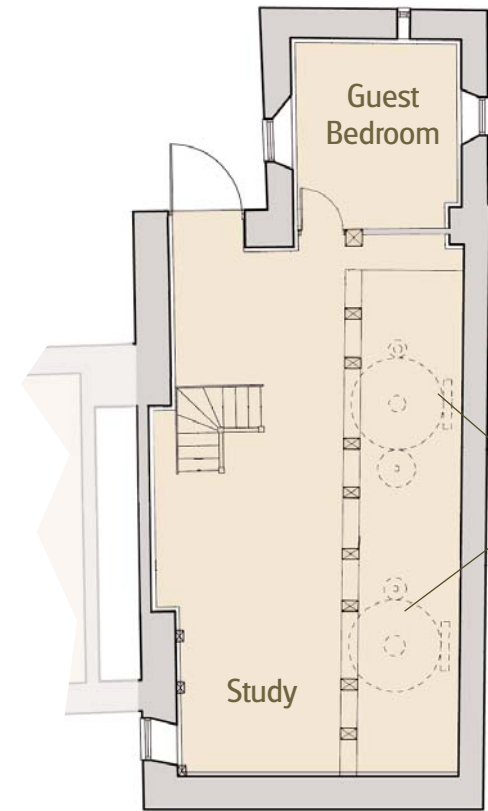


First floor



Historic mill
equipment
restored as
feature

Upper ground floor



Historic mill
equipment
restored as
feature

Lower ground floor

Somerville Barn, Bradbourne Mill, Derbyshire

Ground floor

- Kitchen/Diner: 6.9m x 5.7m (22'7" x 20'4")
- Bedroom 1: 2.7m x 2.5m (8'10" x 8'2")
- Bedroom 2: 5.1m x 2.7m (16'8" x 8'10")
- Bedroom 3: 4.2m x 3.5m (13'9" x 11'6")
- Dressing Room: 3.0m x 2.4m (9'9" x 7'11")
- Store: 3.2m x 2.4m (10'6" x 7'10")

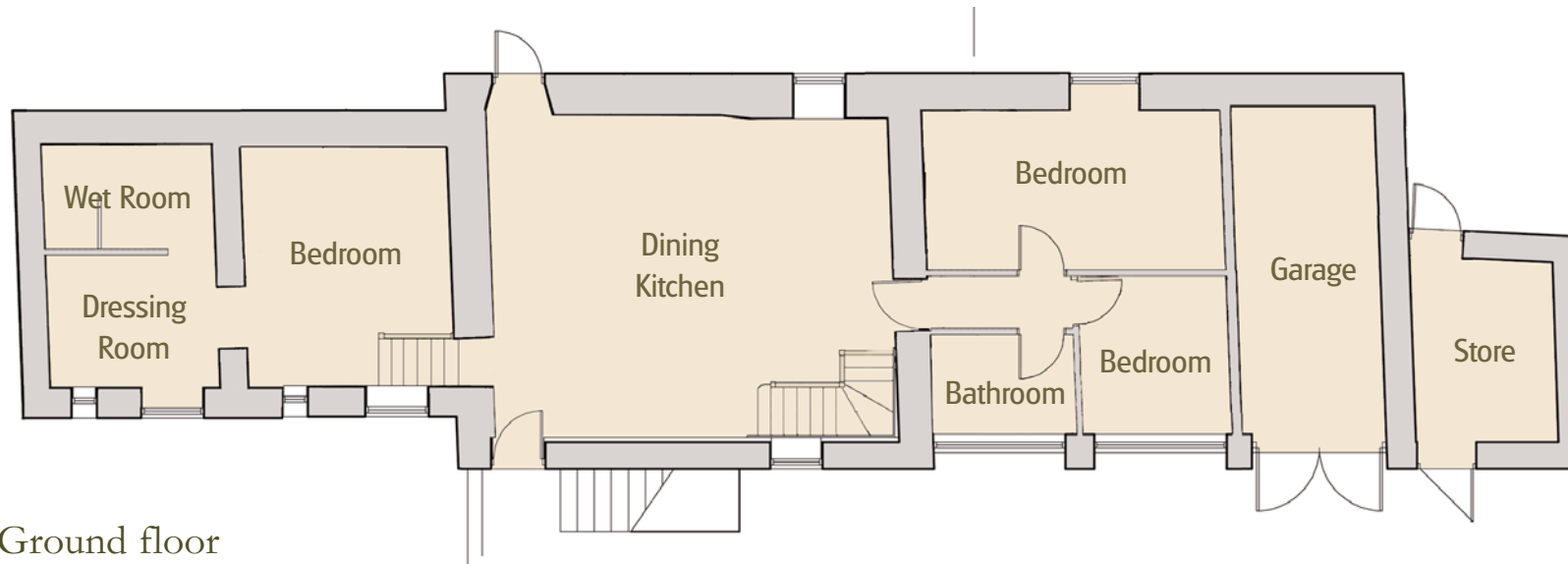
First floor

- Lounge: 7.1m x 5.8m (23'3" x 19')
- Bedroom 4: 5.1m x 4.5m (16'8" x 14'9")



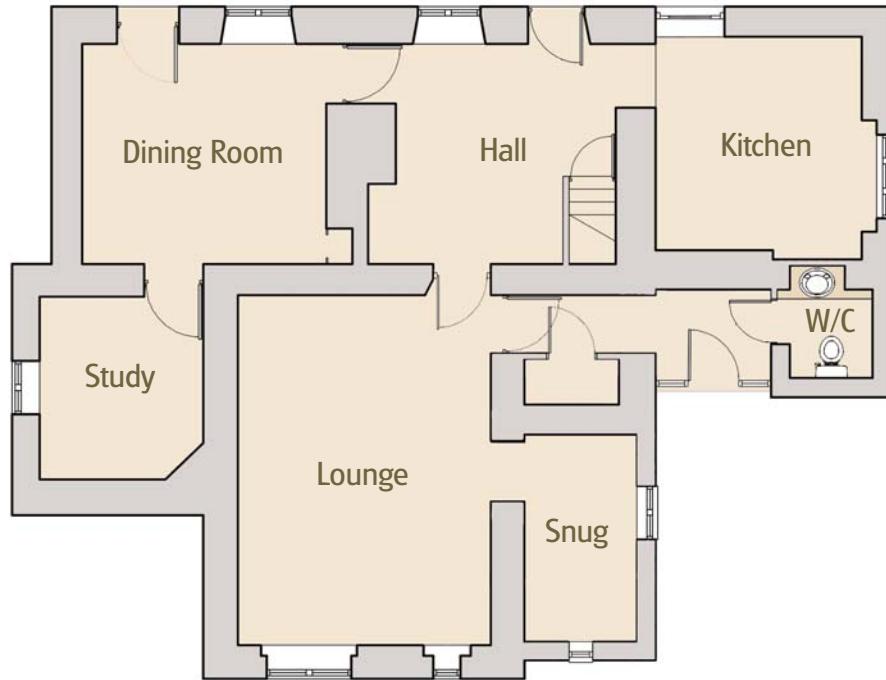
First floor

Note: All measurements are approximate, final sizes may be subject to alteration.



Ground floor

The Old Mill House, Bradbourne Mill, Derbyshire



Ground floor

Ground floor

Study: 3.0m x 2.7m (9'10" x 8'10")
Dining room: 4.0m x 3.6m (13'1" x 11'10")
Lounge: 5.8m x 4.2m (19' x 13'9")
Kitchen: 3.5m x 3.4m (11'5" x 11'2")
Snug: 3.4m x 1.8m (11'2" x 5'11")



First floor

First floor

Bedroom 1: 3.0m x 2.7m (9'10" x 8'10")
Bedroom 2: 4.0m x 2.3 (13'1" x 7'6")
Bedroom 3: 4.1m x 2.7m (13'5" x 8'10")
Bedroom 4: 4.1m x 3.4m (13'5" x 11'2")

Note: All measurements are approximate,
final sizes may be subject to alteration.

Claughton Barn, Bradbourne Mill, Derbyshire

- Lounge: 6.0m x 5.5m (19'8" x 18')
- Kitchen: 5.0m x 4.0m (16'5" x 13'1")
- Bedroom 1: 3.0m x 3.3m (10'10" x 9'9")
- Bedroom 2: 3.3m x 2.3m (10'10" x 8'6")
- Bedroom 3: 3.3m x 3.2m (10'10" x 10'6")
- Bedroom 4: 4.1m x 4.0m (13'5" x 13'1")

Note: All measurements are approximate, final sizes may be subject to alteration.

